

# Tackling climate change and protecting coral reefs



**REEF CHECK**  
**AUSTRALIA**

**2007/2008**  
**Annual Report**

# Testimonials

**Dr. Clive Wilkinson, Global Co-ordinator Global Coral Reef Monitoring Network**

We rely heavily on Reef Check data when we prepare the 'Status of Coral Reefs of the World' reports. Their teams often get to places that government officials cannot. This increases our coverage and detail in these invaluable global reports that decision makers are using to set policy for the management of reefs around the world. //



**Dr. Terry Done, Scientist, Coral Reefs, Associate, Australian Institute of Marine Science**

Reef Check Australia has an impressive record of commitment to coral reef conservation. It provides an important avenue for meaningful community involvement in coral reef issues, monitoring, and conservation at both local and regional levels. Its track record reassures me that your ongoing support will be rewarded in very positive outcomes for the reef, and for all people who care about it. //



**Trevor Long, Director of Marine Sciences, Sea World**

Sea World fully supports Reef Check Australia's South East Queensland Project. The fringing coral reefs in our area are vulnerable due to the many effects resulting from an increase in coastal development. Reef Check Australia is a fantastic initiative that has achieved huge outcomes on a tiny budget. I pledge the ongoing support of Sea World and would like to put a call out to individuals and businesses to help them to achieve their aims to protect our coral reefs. //



**Margaret Conway, Chairperson, Coolgaree CDEP, Palm Island**

The Coolgaree CDEP fully supports the implementation of Reef Check training on Palm Island which has been instrumental in heightening reef health and conservation awareness in the community. It is our hope that Reef Check Australia will receive the support necessary for the continued connection and expansion of its projects in indigenous coastal communities. //



**Dr. Gregor Hodgson, Founder and Executive Director, Reef Check Foundation (International)**

Reef Check Australia has done a fantastic job of setting up a world-class program in Australia and has already contributed significantly to our work on an international scale. As Reef Check Australia continues to gather increased support I believe its dedicated staff will play a very important role in supporting urgent conservation efforts throughout Australia and the Indo-Pacific. //



**Tony Baker, Chairman, Association of Marine Park Tourism Operators**

AMPTO and the marine tourism industry in Queensland have supported Reef Check Australia since its inception in 2001. We believe the project to be extremely valuable to provide us with information on the health of our dive sites. Reef Check Australia is a professionally run organisation that has achieved significant successes over the past number of years. //



**Sheriden Morris, Managing Director, Reef and Rainforest Research Centre**

I congratulate Reef Check Australia for the valuable work they have achieved in delivering a collaborative program that successfully engages the community and business in collecting high-quality information on coral reef health. The information they provide will be used for the conservation and sustainable use of the Great Barrier Reef. //



Front cover photo by Roger Beeden.

This photo shows a clown fish living in a bleached anemone. Bleaching of corals and anemones is caused by climate change and can be fatal. There is a chance this anemone will die which will leave this clownfish and its family homeless.

# Message from the Managing Director

Much has changed in the past two years in regards to sustainability. Who would have thought that Al Gore would win an Oscar for 'An Inconvenient Truth', that Professor Tim Flannery would be Australian of the year? Who would have anticipated the severity of the drought and that extreme weather patterns would put climate change front and centre of the political agenda and uppermost in the minds of households and businesses?

In the past two years sustainability has become mainstream, and at the same time the world's growing population and consumption habits mean our greenhouse gas emissions continue to increase, affecting our fragile coral reefs.

Coral reefs are the most diverse and complex marine ecosystem in the world. Unfortunately, not enough is known about them and the impact human activities (past and present) have on their long-term health.

Australia's coral reefs are a vital part of the Australian environment, economy and culture and are often used as a barometer for global environmental health. They cover an enormous area - the Great Barrier Reef, for example, stretches over 2,000 km in length and consists of over 2,900 individual reefs. Government programs can only monitor a fraction of this area leaving us with insufficient knowledge about the extent and nature of damage caused by coastal development, unsustainable fishing practices and climate change.

**At Reef Check, we believe our role is about showing all people how they can make a difference.**

By integrating our programs into the community and businesses, we aim to deliver ambitious outcomes that will provide research and data that will inform and engender real change. And we will do it competitively, cost-effectively and by engaging all stakeholders in the challenge.

Since 2001, our focus has been on developing and implementing sustainable monitoring and research methods for Australia's reef system. I am proud to say we have had a real impact resulting in us being recognised as a leading agency for community coral reef monitoring.

To ensure Reef Check Australia's long-term viability, we realise it is vital we continue to build a high profile in business and the community sectors. That's why this year we began compiling a Business Plan through PriceWaterhouseCoopers, as well as a fund-raising package to attract sponsorship funds.

Our vision is to protect coral reefs. This is an enormous task but we believe there are many among the general community who share our vision and who will help if we can give them the tools to do so. Reef Check Australia is partnering with governments, businesses, industry, the community and householders to tackle the global challenge of climate change through on-ground campaigns that have tangible results.

Reef Check understands that solutions are already available to slow, and to ultimately reverse, the world's emissions path - but we must act now.

Across Australia and the Indo-Pacific, in every sector, we're working to change attitudes and shift behaviour. We are working hard to deliver solutions that will make a difference in reef sustainability. But we need your help.

Reef Check Australia has prepared its first Annual Report. Encompassed in this document are some of the things we are doing to help our reefs, but it is also a celebration of what we have achieved over the past seven years.

We have grown from a one-person volunteer organisation into a credible network of scientists, community groups, individuals, industry and business, working together to progress the vision of maintaining healthy coral reefs for generations to come. I would like to thank all those who have supported us through our seven years and acknowledge the hard work and support provided from our directors, staff and volunteers.

I hope you enjoy reading about our work and I hope it inspires you to join us and support the important work we do.

**Jos Hill, Managing Director**





# Reef Check Australia is tackling climate change and protecting coral reefs

The new threat of climate change *increases* the need for coral reef monitoring.



The Australian Government lacks the capacity to effectively monitor the vast number of Australian coral reefs on the scale required to *respond to climate change*.

Community and industry partnerships are *essential* to solve our environmental problems in a cost-effective manner.



There is an *urgent* need to increase public understanding of actions they can take to protect coral reefs.



Coral Bleaching can kill our coral reefs



We *must* ensure our children are equipped to tackle the issue of sustainability.

# Our Philosophy

## Our vision

Our vision at Reef Check Australia is the promotion of healthy coral reefs throughout the Australia and Indo-Pacific regions.

## Our mission

To promote healthy local coral reefs through scientific research, community education and marine conservation.

## Showing the way

Reef Check Australia's purpose is to show the way to using our coral reefs more efficiently and reduce everyday impacts.

## Our customers

To achieve our vision we work across all industry sectors, as well as with schools and governments, community groups and individuals to promote and encourage coral reef health and sustainability.

## Core Values

- Raising awareness of the value and sustainability of coral reefs.
- Improving management of coral reefs in Australia and the Indo-Pacific region.
- Empowering local communities in the conservation of their own reefs.
- Maximising stakeholder benefits with minimal cost.
- Acting with professionalism and integrity at all times.

## Our values

### **Collaboration - we work with others to achieve**

We work in partnerships with individuals and organisations across both the private and public sectors to deliver outcomes.

### **Action - we make things happen**

Everything we do is dedicated to changing the way people perceive and use coral reefs.

### **Leading Thinking - we apply the best ideas**

We contribute, challenge, communicate and apply the world's leading thinking in coral reef health monitoring and usage.

### **Inspiration - we motivate others to action**

We seek to inspire and motivate the community and businesses to become involved in creating a healthy and sustainable coral reef system.



# More About Us

Australia is home to the world's most extensive and pristine coral reefs. These reefs are under enormous pressure from human activities and climate change. Although Australia's reefs are among the best managed in the world, they are not immune to these threats. Reef Check Australia offers a way for the public to engage and help look after our coral reefs.

**Reef Check Australia is an award-winning environmental charity that trains community volunteers to actively participate in coral reef conservation. Our data provides an early warning system for changes in coral reef health which is of particular importance in light of the predicted impacts of climate change.**

Because our work is done almost entirely by volunteers, your support goes a long way to help us raise awareness and protect coral reefs.

## What do we do?

Reef Check Australia is a non profit environmental organisation that engages the Australian community in coral reef conservation.

Our volunteers are part of a global Reef Check network of volunteers who regularly monitor and report on coral reef health. We partner with leading marine research organisations, tourism companies and dive operations, universities, government, local and international volunteers and a variety of other businesses and organisations.

We operate on three different levels – [education and training](#), [research](#), and [conservation](#).

## Education and Training

Reef Check Australia aims to educate the public about the value of coral reefs and the crisis facing them around the world. The information we collect is used by community groups, governments, universities and businesses to design and implement ecologically sound and economically sustainable coral reef management.

Our globally-accredited training programs provide our volunteers with the tools to gather high-quality data that's valuable to coral reef managers.

## Research

By monitoring coral reefs over time, we gain insight into how reefs respond to human and natural impacts. This information helps us to identify which coral reef areas appear to be more resilient to impacts such as climate change, over fishing or water quality pollution. The longer the study, the more valuable the information becomes to identify the key actions we need to take to protect our coral reefs.

Reef Check Australia volunteers monitor coral reef sites that have been identified by the community as important. Reef Check monitoring helps to fill in the gaps where other programs do not go. Our monitoring sites currently include inshore fringing reefs as well as important dive sites on the Great Barrier Reef.

## Conservation

By engaging the community in monitoring and reporting on reef health, Reef Check Australia helps to raise awareness and public action to protect coral reefs.

## Funding

Funding received under local, state and federally administered grant programs has contributed only part of the way in allowing Reef Check Australia to carry out its vital work. The efforts of volunteers and the in-kind donations from industry operators has enhanced the value of the programs Reef Check delivers, and highlighted the tremendous level of passion associated with pursuing this important cause.

Our business approach is to build cost-effective programs to conduct scientific coral reef monitoring and effective reporting of data. Our programs also provide public education and awareness-raising opportunities to increase community support for conservation initiatives.



## How you can help

Reef Check Australia has a number of projects that require urgent funding to proceed. Here are some of our major projects in which funding is needed to complete the projects or for ongoing annual costs.

Project	Cost
Development of an Enterprise Information System database	\$110,000
Continuation of the Great Barrier Reef Monitoring Project - northern reefs, 30-40 dive sites	\$120,000 p.a.
Expansion of the Great Barrier Reef Project – southern reefs, 10-20 dive sites	\$120,000 p.a.
Establishment of a Coral Trout Monitoring Program	\$120,000 p.a.
Further development of the new Indigenous Community Engagement Project	\$160,000 p.a.
Continuation of the new South East Queensland Reef Monitoring Program	\$200,000 p.a.
Continuation and expansion of the Inshore Monitoring Program	\$120,000 p.a.
Finalise and launch the Reef IQ Education Program nationally	\$220,000 p.a.
Continue development of and launch Reef Check's EcoAction Program	\$110,000 p.a.

## Corporate Objectives

- The generation and publication of select coral reef data that is highly valued by scientists and marine managers.
- The establishment of reef monitoring programs that are accessible to a wide range of the population and yet still produce valuable data.
- The establishment of a coral reef health database for Australia and the Indo-Pacific region that is integrated into the global Reef Check network.
- For the majority of Australian adults and children to understand the importance of coral reefs and be able to tell you what they can do to help protect them.
- Development and implementation of cutting edge training programs to enhance the value of the data collected by volunteers.
- Quality marine-based education programs for local communities.
- Meaningful participation by local communities in the promotion and maintenance of coral reefs through Reef Check Australia programs or use of the database.
- Promotion of the sustainable use of coral reefs through partnerships with governments, researchers, businesses and community groups.
- Raising public awareness of the economic, ecological and social value of coral reefs.
- Promotion of the Reef Check Australia brand.
- Financial sustainability of Reef Check Australia.

## Key Projects

Since its inception, Reef Check Australia has founded a number of successful coral reef monitoring projects including:

- the Great Barrier Reef Project;
- the Coral Trout Monitoring Project;
- the South East Queensland Reef Monitoring Project; and
- the Inshore Monitoring Program.

In addition, Reef Check Australia has developed an innovative education program for young people called Reef IQ which is aimed at tackling the causes of our environmental problems.

Also, we have commenced an Indigenous Community Engagement project on Palm Island that aims to provide an important catalyst to enable community-based coral reef management, and potential employment opportunities based on the sustainable use and management of the marine environment.

Reef Check Australia also plans to launch the newly developed global Reef Check EcoAction Program which provides opportunities for tourists and young people to participate in coral reef conservation.



To find out more about how to get involved, contact us at [support@reefcheckaustralia.org](mailto:support@reefcheckaustralia.org)



# Key Achievements 2007/2008

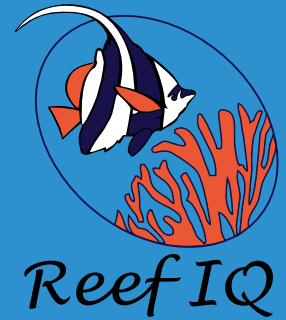
Photo by Matt Curnock

- This is now the 8th year of Reef Check Australia volunteers monitoring the health of key dive sites on the Great Barrier Reef. The accumulation of collected data from 30 dive sites is beginning to give us a long-term dataset with crucial baseline information that will help us to better understand the effects of climate change.
- A massive 544 pieces of fishing line and trash were cleared from 28,800 m<sup>2</sup> of reef around the Palm Island Group, reducing the threat of entrapment to marine life.
- A new community Coral Trout Monitoring Program was developed and will be ready to launch in 2009. With unique protocols designed by scientists, this project will open up opportunities for recreational fishers and tourists to provide valuable information on fish stocks and habitat health from otherwise unmonitored reefs.
- Substantial progress was achieved in establishing our South East Queensland Reef Monitoring Program, where the first data is currently being collected on the status of fringing coral reefs off the Sunshine Coast, Moreton Bay and the Gold Coast. This will help us measure the success of water quality improvement programs in the long-term as well as give us information on the impacts of coastal development on the marine environment.
- The specifications for our new Enterprise Information System have been set out and development is underway. This uniquely designed database will store all Reef Check Australia's collected data, allow third parties such as coral reef managers and scientists to access it in a variety of formats, provide a means for community members to input their data directly from a convenient location, and disseminate data and reef reports to all interested parties.



# Key Achievements 2007/2008

- Young people can now test their Reef IQ with our new environmental education program which was piloted in the Townsville area with great success. This program is designed to engage young people and their families in reducing their carbon and environmental footprint.
- We established our first Indigenous Reef Check Australia team on Palm Island with plans in place to train them in 2008/2009, in partnership with Coolgaree CDEP.
- Our EcoAction Program was developed further, bringing it closer to launch. This program will open up opportunities for snorkellers and new scuba divers to become involved in coral reef monitoring activities and provide us with an important revenue stream to help support our projects.
- A Business Plan is currently being developed to better enable us to achieve our longer-term objectives.
- We launched a membership program enabling community members to keep in touch with our activities. This program will enable us to communicate our important message across the Australian and International community.
- We successfully ran our first photography competition in partnership with Project AWARE, with an array of prizes generously donated by numerous organisations. There were 75 entries with Giles Winstanley winning the Reef Check Australia Photographer of the Year 2007. During 2008 we successfully ran our International Year of the Reef Photography Competition with 139 entries. Winners will be announced later on in the year.



Reef IQ



# Meet our Directors



**Jos Hill**  
Managing Director

Jos Hill is Reef Check Australia's Managing Director. In partnership with Undersea Explorer and Andy Dunstan, Jos established the beginnings of Reef Check Australia as a volunteer with the flagship Great Barrier Reef Project in 2001. The aim was to help local communities monitor their coral reefs, and enhance public awareness of the threats to coral reefs. In 2004, Jos founded Reef Check Foundation Limited (Australia). Today, over 100 Reef Check Australia volunteers monitor more than sixty sites throughout Australia.

Jos has a Master of Applied Science in Natural Resource Management from James Cook University as well as a Bachelor of Science in Biology (International) from the University of Leeds in the UK, which included a minor project at Autonomia University in Madrid, Spain. Jos is also a PADI certified open water scuba instructor.

This academic background compliments her comprehensive experience in coral reef conservation and monitoring in the Indo-Pacific. Jos has also been involved in a number of publications, and was the primary author of an international resource book for managers on coral reef monitoring.

She designed Reef Check Australia's Training Course and was a major contributor to Reef Check International's EcoAction program and standard Reef Check EcoDiver course. As a Reef Check Instructor Trainer, Jos has led a number of Reef Check training workshops in the Indo-Pacific and in Mexico.



**Andy Dunstan**  
Director

Andy is a marine scientist, biochemist, Class Four ship's captain, dive instructor and educator.

He holds a BSc from James Cook University and a Masters Qualifying degree from the University of Queensland. Andy is currently writing his PhD on his studies of deep sea nautilus biology and conservation, as well as a project called 'The Great Barrier Reef Undersea Experience' to showcase a cost-effective and unique model which combines tourism, science and conservation.

Throughout his career, Andy has focused on bringing together scientific, industry, government and community sectors to work towards coral reef conservation.

He has helped to facilitate a Memorandum of Understanding for protection of the northern Coral Sea reefs, and has advised on rezoning of the Great Barrier Reef Marine Park. He has also co-developed minke whale and shark tourism guidelines and created a range of marine education and training programs. More recently, Andy has worked with the Worldwide Fund for Nature to describe the species diversity and unique nature of Coral Sea reefs.

Through Undersea Explorer, Andy was the North Queensland Reef Check co-ordinator from 1998. He and Jos established the beginnings of Reef Check Australia in 2001. Andy has been a board member of Reef Check Foundation Limited since it was established in 2004.



**Peter Payne**  
Director

Peter Payne owns two successful businesses – a registered training organisation and a safety compliance company. Peter has built up both businesses from humble beginnings and now operates nationally. He brings a broad range of business management skills and training expertise to the Reef Check Australia board.

He is one of Australia's leading trainers in the diving field with over 32 years of diving experience - with the last 17 as a dive instructor. In 1995 he became a Course Director with the PADI organisation and has taught over 1,300 dive instructors.

He has been involved in protecting the reef since 1993 and directly involved with Reef Check Australia since January 2004 and joined the Board of Directors in 2006.

Peter holds a vast array of diver training ratings as well as a Diploma of Occupational Health and Safety, Cert IV in Training and Assessment, and a Cert III in Aquaculture. Peter sits on the Australian Standards SF-17 committee, which is responsible for all diver training in Australia.

Peter is also an acknowledged instructional designer with twelve published training manuals to his credit.



**John Rumney**  
**Director**

John Rumney has made a living on the Great Barrier Reef since 1977 - first in commercial fishing and light game charters, followed by day and liveaboard diving, research and conservation co-ordination.

John was one of the original founders of Low Isles Preservation Society in 1993 and acted as President for four years from 1998-2002. John was also conservation workshop co-ordinator for the 1995 Cairns Dive Festival. He has a long-term working relationship with the World Wide Fund for Nature and was very active in the Great Barrier Reef Campaign to rezone the Great Barrier Reef Marine Park in 2004. John is currently working with the Worldwide Fund for Nature and PEW Environment Group on the Coral Sea campaign.

John also sits on a number of other committees including the Tourism and Recreation Reef Advisory Committee for the Great Barrier Reef Marine Park Authority, the Local Marine Advisory Committee, and the Cod Hole and Ribbon Reef Operators Association.

Through these different roles John has been able to liaise with the community as well as educate industry on the importance of conservation. John has worked with the dive industry, recreational fishers, tourism and local business to bring a level of awareness of the importance of a healthy reef to each stakeholder group.

In 1995 John initiated the Undersea Explorer project 'Harnessing the tourist dollar to fund Research and Conservation'. John was concept originator, General Manager, Skipper and was also responsible for Marketing until 2007.



**Andrew Gillespie**  
**Director**

Andrew is a Senior Manager with Ergon Energy Corporation and specialises in business strategy related to technology futures. He is responsible for development and implementation of business strategies relating to the Ministerial Council on Energy's smart meter policy, as well as Ergon's whole-of-business needs in relation to metering generally.

Andrew has been a keen proponent of industry change and regularly presents topical papers at industry conferences. He is a long-term member of the Standards Australia committee for his industry and is active within a number of Ministerial Council on Energy working groups.

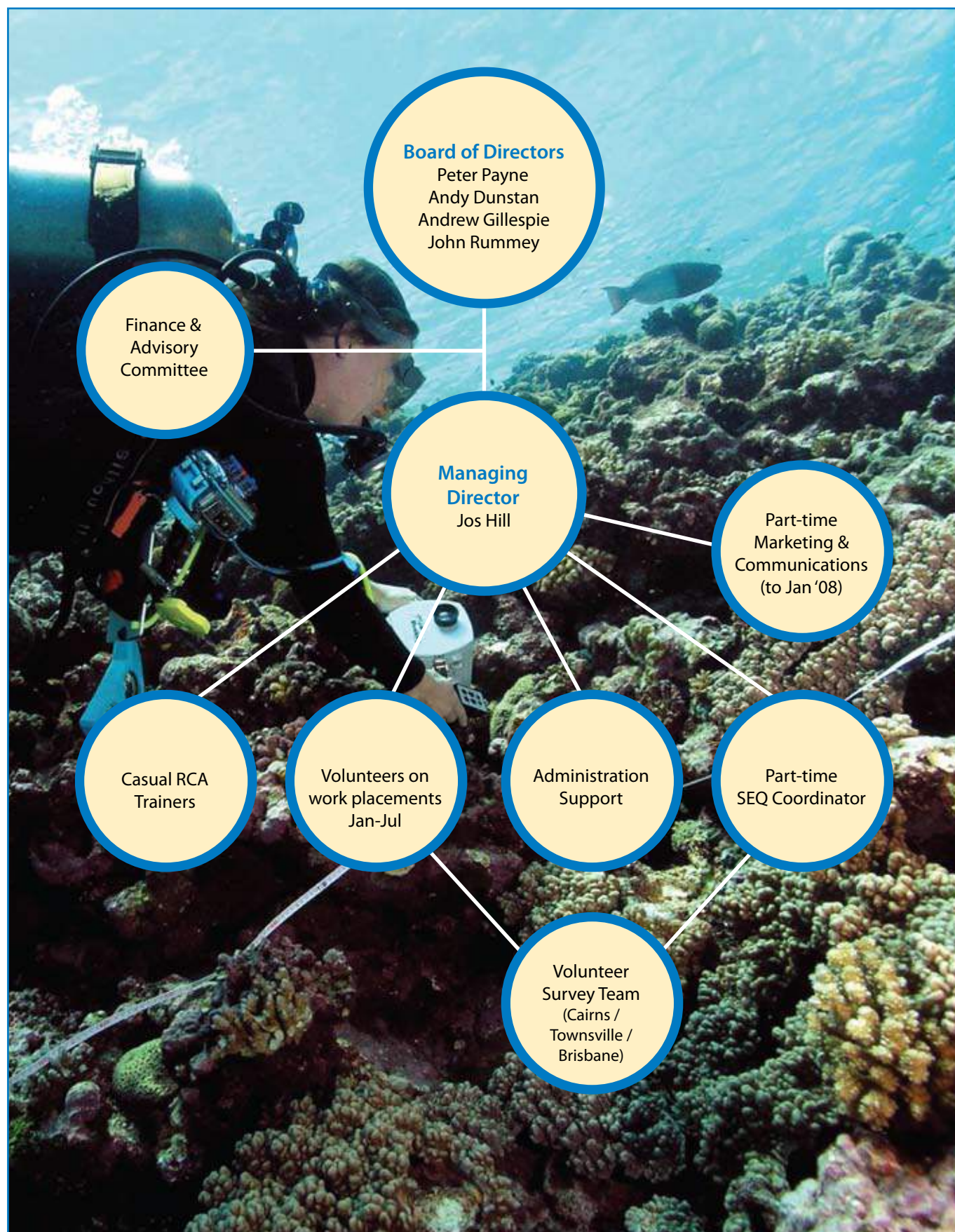
Prior to joining Ergon in July 2006, Andrew occupied several Australian and international roles with responsibilities covering market development, product management and managing the delivery of consultancy, services and projects.

Andrew has been diving for almost 15 years and is a PADI master scuba diver. He has logged over 1,600 dives and is particularly interested in wreck diving.

Apart from his work with Reef Check Australia, Andrew holds committee roles with the Underwater Research Group of Queensland and works with Partnerships Townsville - a Townsville City Council initiative.



# Organisational Structure 2007/2008



# 2007/2008 Project Reports

Reef Check Australia is currently implementing a number of projects. The next few pages will set out the status of each project.

## Business Planning and Fundraising

### 2007/2008 Objective:

To develop a Business Plan and Corporate Fundraising Strategy.

### Achievements:

In partnership with PriceWaterhouseCoopers we have begun development of a Business Plan in order to help us achieve our objectives. We have also developed a Sponsorship Program in a bid to find Reef Partners who can help us continue our valuable work towards the conservation of coral reefs.

### Future Goals:

To ensure our Business Plan is updated regularly and to implement our Corporate Fundraising Program with success.

## Coral Trout Monitoring

### 2007/2008 Objective:

To develop and scientifically validate a protocol that can be used by community members with minimal training to monitor coral trout and their habitat.

### Achievements:

The purpose of this project is to provide opportunities for recreational fishers and other reef visitors to contribute to our scientific knowledge of the status and trends of popular fish species, such as coral trout and their habitat.

This project will improve the recreational fishing community involvement and knowledge in management of the Great Barrier Reef ecosystem as well as provide coral reef managers with valuable information on fish stocks.

Financial support for project development was provided by the Great Barrier Reef Marine Park Authority, the George Alexander Foundation, Landcare Post Office and Project AWARE. In-kind supporters were James Cook University's Orpheus Island Research Station and Reef Check Australia volunteers.

In-kind support has been offered by CapReef and the Australian Underwater Federation by use of their network who, as recreational fishers, are key stakeholders. Researchers from James Cook University have provided technical advice in the development of this project. Significant interest to participate has been expressed by community members and existing Reef Check volunteers.

### Future Goals:

To secure funding in order to launch the program to the general public which is planned for 2009.





# Great Barrier Reef Project

## 2007/2008 Objective:

To monitor more than 25 dive sites on the Great Barrier Reef and develop communications materials for dive operators.

## Achievements:

The Great Barrier Reef Project has been running since 2001 and monitors more than 30 key dive sites on the Great Barrier Reef from Airlie Beach to Port Douglas, and Osprey Reef in the Coral Sea. This year 20 dive operators supported this program by providing in-kind berth space to Reef Check Australia volunteer teams for training and conducting surveys of 26 dive sites. In-kind supporters include the Australian Marine Park Tourism Operators, individual tourism businesses on the Queensland coast and the time of numerous enthusiastic volunteers.

Consultation was also undertaken with dive operators in order to develop a plan for the production of communications materials. These materials aim to provide tourists and operators with more information on coral reefs, the impacts (including climate change) that threaten them and what Reef Check does to combat these impacts. This plan was developed and the initial materials including an Operator Information Pack and an information brochure have been produced. A more detailed information booklet and poster are planned for 2009.

Initially, this project was part-funded by small individual Commonwealth Envirofund Grants between 2003 and 2005. Since 2006/2007, this project has been financially supported by two organisations. The Great Barrier Reef Marine Park Authority has committed \$100,000 per year for this project and a number of others until 30 June 2009. The Marine Tropical Science Research Facility administered through the Reef and Rainforest Research Centre has committed \$50,000 per year until 30 June 2010.

The surveys for this project have been organised by volunteers on six-month placements with Reef Check Australia. Often these volunteers travel from overseas because of the opportunity to gain experience on the Great Barrier Reef and the prestigious reputation of Reef Check programs internationally. These volunteers provide their own living expenses and gain experience in project management, team leadership and coral reef monitoring. With increased costs of the standard of living, it is becoming increasingly difficult for these volunteers to afford to support themselves so we aim to gather some funds to help support them.

Reef Check Australia would like to make a special acknowledgement of Steve Prutzman and Tara Swansborough who volunteered as Project Officers for the 2008 survey season.

## Future Goals:

To acquire long-term funding to sustain this project in order to expand the number of dive sites surveyed and to further develop interpretation materials that help to engage tourists in Reef Check Australia projects.

**Dr. Russell Reichelt,**  
Chairman, Great Barrier  
Reef Marine Park Authority  
I commend Reef Check Australia  
for its valuable work in engaging  
the local community and  
businesses. Their contribution  
builds on our knowledge of  
the health of the Great  
Barrier Reef.

Photo by Chris Jones



## Inshore Reef Monitoring

### 2007/2008 Objective:

To continue to monitor inshore fringing reefs around Magnetic Island.

### Achievements:

Reef Check Australia's Inshore Monitoring Program provides a cost-effective 'early warning system' of any changes in the health of key inshore coral reefs as well as monitoring the sustainability of popular fish stock, such as coral trout.

Inshore coral reefs such as those fringing islands are often the most visited and used by local communities for recreation so community interest in their sustained health is high. However, due to this level of use and their proximity to coastal development and agriculture (causing water quality pollution), they are perceived to be most at risk from human impacts. Five inshore sites were surveyed over the last season with more planned for the future.

This project is currently not funded but received financial support in the past from Townsville City Council's Creek to Coral program and Envirofund. However, for the project to continue, financial support is necessary.

### Future Goals:

To secure long-term support to expand the number of sites through Queensland including those deemed most important by community members.



## Fishing Line Clean Up

### 2007/2008 Objective:

To clear fishing line and other marine debris from sites around the Palm Island Group.

### Achievements:

A massive 544 pieces of fishing line and trash were cleared from 28,800 m<sup>2</sup> of reef around the Palm Island Group, minimising the threat of entrapment to marine life.

Financial support for project development was provided by the Great Barrier Reef Marine Park Authority, the George Alexander Foundation, Landcare Post Office and Project AWARE. In-kind supporters were James Cook University's Orpheus Island Research Station and Reef Check Australia volunteers.

### Future Goals:

Reef Check Australia is enthusiastic to respond to reports of excessive trash on local coral reefs by sourcing funds to organise future clean-ups.



### Steve Glasby, Reef Check Australia volunteer

As a recreational fisher and diver I really valued the opportunity to see the difference between the fish populations between the no take and fishing zones and can understand the impact fishing has on the reef and the health of fishing sites for our future generations. My involvement with Reef Check has made me more carefully consider how my actions can impact upon the environment and has opened an avenue to meet a diverse range of people with a common interest to help sustain our environment.



## South East Queensland Reef Monitoring

### 2007/2008 Objective:

To develop a project plan for monitoring coral reefs in South East Queensland and determine all the logistics required to carry out the operations.

### Achievements:

A project plan was developed and many logistics were worked out by our South East Queensland (SEQ) Coordinator for coral reefs off the Sunshine Coast, Moreton Bay and the Gold Coast. Initial community members were trained as the first SEQ Reef Check Australia volunteers, and the first surveys were planned.

This project provides valuable information where there is currently a serious data gap, and the condition of the fringing reefs is currently unknown. However, water quality pollution from continued urban development is a serious issue within the catchment which includes Moreton Bay - a RAMSAR wetland site. It is important to determine the health of these reefs to ensure these valuable resources are maintained and impacts can be identified and mitigated.

This project will educate and engender stewardship in the local community about the important marine habitats on their doorstep and the actions needed to protect them in an area of high coastal development.

South East Queensland Catchments Natural Resource Management Board has expressed a desire to integrate Reef Check Australia data into their catchment database for use in their Water Quality Improvement Program. The organisation also provided \$15,000 of seed funding to help establish the project in 2007. Envirofund financed the project in 2008. Sea World is a major in-kind supporter as well as the Environmental Protection Agency and a number of small boat operators by way of reduced fares, and the Reef Check Australia volunteers who contribute their time. Financial support is necessary to continue the project.

### Future Goals:

To carry out surveys on 12 sites in the first year and secure long-term funding to ensure the future sustainability of the project including the implementation of other Reef Check Australia engagement programs in the region.



## Indigenous Community Project (Piloted on Palm Island)

### 2007/2008 Objective:

To scope out the potential for Reef Check Australia programs to add benefit to the indigenous community on Palm Island.

### Achievements:

An initial scoping project was completed on Palm Island with the result being that it was considered beneficial to the indigenous community to train community members, including the new sponge farm divers, in monitoring their local coral reef health. The project will provide training and participation opportunities to Palm Island community members for coral reef education and marine monitoring in the Palm Island area.

The long-term aim is to provide capacity for all coastal indigenous community members to participate in environmental management and help to generate additional employment opportunities. Reef Check Australia aims to tailor its current monitoring and educational programs to enable successful outcomes in these communities.

Financial supporters of the initial Palm Island training include the Great Barrier Reef Marine Park Authority, Envirofund and the Burdekin Dry Tropics Natural Resource Management Board (2007/2008). The Coolgaree CDEP, Manbarra Traditional Owners and Palm Island community have volunteered their time towards this project. Advice was provided by the Australian Institute of Marine Science's sponge researchers who are involved in the Palm Island Sponge Farm project. Scuba Pro Australia provided some snorkel equipment for the children on Palm Island to participate in this project.

Capacity building in coral reef education and monitoring at Palm Island will provide an important catalyst for ongoing community participation in marine environmental conservation and planning, and employment based on the sustainable use and management of the marine environment. The marine realm of the Palm Islands presents potential opportunities for sustainable livelihoods consistent with cultural heritage values and Marine Park zoning. Significant funds are required to co-ordinate ongoing activities on Palm Island and to enable the benefits of this project to be implemented in other coastal indigenous communities.

### Future Goals:

To train community members on Palm Island (including the sponge farm divers) in Reef Check monitoring procedures, provide the local schools with environmental education materials and conduct initial workshops, and facilitate surveys in the area. The long-term goal is to seek financial support to tailor Reef Check Australia programs for implementation in other coastal indigenous communities.

Palm Island Sponge Farm divers are enthusiastic to start their Reef Check training  
Photo by Tom Stevens





## Database

### 2007/2008 Objective:

To develop a database to input, store and report on Reef Check Australia data.

### Achievements:

This has been a particularly challenging project for the Reef Check Australia team as database specifications have grown over time with the increasing realisation of its enormous potential to ease Reef Check Australia operations. This has resulted in a progressively more complex project with costs higher than initially planned. However, these greater costs are associated with the much higher returns and benefits that this unique database will bring.

The project was instigated with a simple pilot database using Google Earth to report on data. Consultations were then undertaken with key stakeholders in order to understand the requirements necessary for the database to be successful. The contacts part of the database was then developed and our free membership program was launched to the general public using this technology. IT specialists were then engaged to develop a detailed specifications plan for the Enterprise Information System.

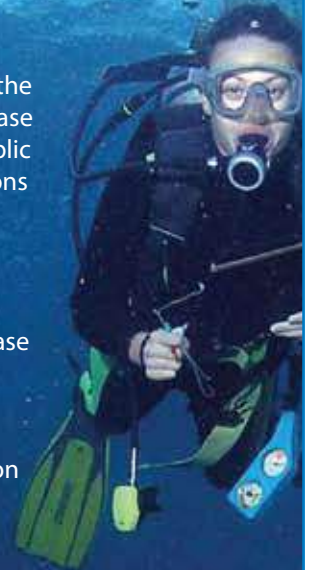
The system design will have a strong emphasis on flexibility, portability, interoperability and ease-of-use to accommodate future initiatives. It aims to promote collaborative data sharing between industry stakeholders, to act as a foundation for an international database adaptation and to ultimately increase early warning signs on reef health degradation.

The outcome of this project will benefit all Reef Check Australia projects by providing immediate feedback to stakeholders on the information they collect through participation in coral reef monitoring.

Financial support has already been received from the Great Barrier Reef Marine Park Authority and Envirofund to initiate development of the specifications plan. Additional funding is urgently required for the implementation of this plan. Significant in-kind work has been provided by Donovan Media Group towards the contacts database.

### Future Goals:

To secure final funding for the database and complete Phase One, ready for launch in early 2009, and the final phase ready for launch late 2009.





## Reef IQ Education Program

### 2007/2008 Objective:

To develop and pilot environmental education materials for young people in Australia which promote sustainable practices and bring coral reefs into the classroom at the same time as meeting curricular objectives.

### Achievements:

Reef IQ is a unique program aimed at helping to prevent the symptoms of coral reef degradation by tackling the causes. Reef IQ will increase awareness of coral reef issues, engender behavioural change towards more sustainable practices and provide young people with the skills, knowledge and capacity to partake in environmental monitoring, decision-making and conservation.

This year a project plan was complete, the materials were piloted in five schools as well as at four local workshops in Townsville, and initial grant applications were submitted.

The end products of Reef IQ are high-quality educational materials that are freely available on the internet for all educators of young people including parents and guardians. These materials will support users in educating young people on coral reefs in Australia and help them to motivate young people to become interested and involved in caring for their environment. A fun kids section available on the website will provide interactive games and educational activities on coral reefs for young people to be used at home or in the classroom.

We consider this program extremely important to provide our young people with practical skills in environmental management and research. This also facilitates the involvement of the next generation in the important mission of ensuring ecological sustainable management of all our natural resources. Finally, this program will provide sustainable support, including enthusiastic volunteers, for future Reef Check conservation programs.



This project was supported financially by Townsville City Council's Creek to Coral Program in 2006/7 by the provision of \$10 000. An Envirofund grant also helped to support workshops and some educational materials. However most of the work on this program to date has been done on a volunteer basis. Reef Check Australia would like to make a special acknowledgement to Malo Hosken and Jo Roberts who volunteered their time to develop the first draft of the Reef IQ program materials.

### Future Goals:

To finalise the materials, upload them onto Reef Check Australia's website for free download, carry out a monitoring and evaluation program, and source financial support to launch this program nationally and engage a long-term Education and Outreach Officer on staff.

**Sheree Bell, Vice-President, Marine Teachers Association of Queensland.**

“ We believe that the Reef IQ project will provide a unique and educationally beneficial teaching and learning experience for students at all stages of learning. There is a great need for resources such as these that provide teachers and other community leaders with valuable, activity-based materials to support the environmental education of young people. This program will provide young people, as future caretakers of the environment, with an enhanced capacity to protect Australia's natural environment. ”



## EcoAction

### 2007/2008 Objective:

To further develop the program carrying out piloting and risk assessment.

### Achievements:

EcoAction aims to provide opportunities for snorkellers and new scuba divers to become involved in coral reef monitoring activities. It also includes practical educational and skill-building programs for young people. Each product has been designed by Reef Check scientists to give a deeper knowledge and understanding of the coral reef ecosystem.

The EcoAction program provides a range of interactive educational experiences that will stimulate active participation in coral reef conservation activities, empower tourists to collect reef health data, generate revenues to support established Reef Check projects here and around the world, and provide the means for future monitoring teams to self finance wherever there are existing hotels and dive shops. Reef Check Australia's Managing Director was part of the international team that worked with Reef Check Foundation (International) to develop these programs supported by the United Nations Environment Program, USAID and the United Nations Foundation.

Products include an Underwater Reef Guide which is a unique underwater book that is like taking your own marine biologist underwater. A Discover Reef Check course helps participants to gain firsthand experience in how Reef Check survey volunteers conduct coral reef research around the world. The course includes a one-hour presentation, where Reef Check's methods for monitoring coral reef health are introduced. This is followed by a one-hour guided dive where participants can try some of the sampling techniques.

Participants that take the EcoDiver Reef Monitoring course become certified to join Reef Check International survey teams around the globe. This course teaches participants the information needed to conduct full-scale reef surveys and to contribute to Reef Check's international data set on coral reef health.

This year a risk assessment was carried out for Australia which resulted in the development of dive policies to enable safe participation by both adults and young people. The Underwater Reef Guide was piloted in Queensland. This pilot increased our understanding of the support infrastructure needed to successfully implement this program on a larger scale in Australia.

### Future Goals:

To source financing to launch the EcoAction Program in Australia and secure a revenue stream to help support Reef Check Australia programs.





## Community Marine Management Program: Indonesia

### 2007/2008 Objective:

To help source finance for a local Reef Check Centre at Tejakula District, Bali, Indonesia.

### Achievements:

Reef Check Australia partnered with a private donor and Reef Check Indonesia to help fund the implementation of a Reef Check Centre at Sembiran village in northern Bali. The Reef Check Centre includes a Kubu Parisanta Bungalow as an information, training, and ecotourism centre that is run for, and by, the community to support a new Marine Management Area (MMA).

The MMA was launched by the Bali Province Tourism Department who also helped to fund the project. The department head, Nurjaya, said, "the initiation of the MMA is an inspiring and intelligent action taken by the community and the government". Village development is really important for conservation. Resources need to be managed in an integrated way with economic development, education, and access to sustainable resources use.

Planning for the MMA began in 2005 as part of Reef Check Indonesia's Marine Aquarium Market Transform Initiative Project. This project was a collaboration of three organisations: Reef Check Indonesia, Marine Aquarium Council, and Community Conservation Investment Forum with the aim of facilitating the Bondalem people to manage their MMA together. Reef Check Indonesia focused on the MMA participatory development, the Marine Aquarium Council provided the certification standard through technology improvement and the Community Conservation Investment Forum supported the effort by building economic constituency through micro financing capacity building.

The community understand there is still a lot to do, but are optimistic that they can achieve it with their gotong royong spirit (bahasa for working together as one community).

### Future Goals:

Reef Check Indonesia aim to continue their valuable work to support community resource users to achieve sustainable outcomes. The involvement of Reef Check Australia was a one-off for 2008. Once its Australian strategic goals have been achieved, Reef Check Australia aims to expand to regularly work with Indo-Pacific Reef Check teams to help to build local capacity to achieve important conservation outcomes.

Putu Bagiada, head of Buleleng District signed the Marine Management Area plaque at Bon Dalem.



# Future Goals and Objectives

Photo by Justin Gilligan

Reef Check Australia has a number of short-to long-term goals for Queensland, Australia and the Indo-Pacific region. These are listed below.

## Action Plan

- The integration of Reef Check Australia data into all coral reef management processes within Australia by 2020.
- The online accessibility of Reef Check Australia data to all stakeholder groups.
- Widespread availability by 2020 of educational programs for both school children and adults to enhance their involvement in coral reef conservation.
- By 2020, Reef Check Australia will be a world's best practice training hub within the Indo-Pacific region.
- From 2009-2020 Reef Check Australia will develop strategic partnerships with corporations to enable sustainable financing of Reef Check programs.
- The ongoing identification of simple actions that the general public can take to minimise global threats to coral reefs.
- The ongoing development of tools and skills with local communities and volunteers to aid coral reef monitoring, conservation and management.

## Queensland Tasks

- By 2009 Reef Check Australia will have an online data reporting system that is linked to a spatial database. The reporting system enables community scientists, managers and other stakeholders to access metadata and raw data on request.
- By 2011 Reef Check Australia will finalise a proven system for training community volunteer scuba divers to safely collect precise data on coral reef health from sites that would otherwise not be monitored by current Government programs. This system is already in a very advanced stage and simply needs periodic review and improvement before being available state-wide.
- By 2011 scuba divers, snorkelers and recreational fishers throughout the state will have opportunities to become involved in Reef Check activities. This has already been achieved in North Queensland.
- By 2011 Reef Check Australia data quality will be known and used by coral reef managers to make management decisions.
- By 2011 Reef Check Australia data will be used by community members for their participation in coral reef management.
- By 2011 Reef Check Australia will have a network of Reef Check teams throughout Queensland, which include teams in Far North Queensland, Burdekin, Whitsunday Region, Fitzroy Basin, Burnett Mary, and the South East Queensland Region (Sunshine Coast, Brisbane and Gold Coast).
- By 2011 Reef Check Australia will have indigenous community participation.
- By 2013 25-50 per cent of Queensland-based school-aged children aged 10 and above will be able to tell you how they can become involved in coral reef monitoring and conservation, and will be able to explain why this is important.
- By 2013 25-50 per cent of Queenslanders will have heard of Reef Check.

## Australia Wide Tasks

- By 2015 the Queensland objectives will be achievable at a national level.

## Indo-Pacific Tasks

- By 2015 there will be a minimum of two annual Reef Check expeditions to the Indo-Pacific region. These expeditions will enable Reef Check Australia volunteers to help educate local communities in the monitoring of their coral reefs as well as to collect valuable data.

# Financials



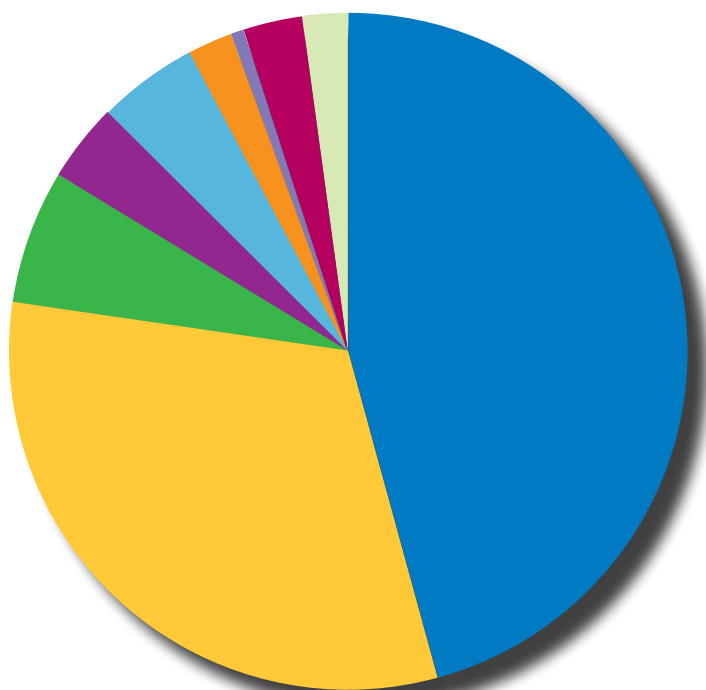
Over the last seven years Reef Check Australia has achieved a remarkable amount on an extremely small budget. Through this experience we have developed a cost-effective system to implement our programs built upon strong partnerships and passion.

The following graph shows our revenue sources during 2007/2008. The majority of our funds come from government and private grants. The challenge with this situation is that grant and contract funding is tied to a direct project outcome, is insufficient to support our overheads and cannot be used to implement our growth strategy.

**To sustain and expand upon our efforts we are now looking for corporate partners to help us implement our innovative projects on the scale required to save our coral reefs.**

## Revenue Sources 2007/2008

### Percentage of Income



### Disclaimer:

These financial figures are based on physical income received during 2007/2008. Unexpended grants have not been factored in.



# REEF CHECK FOUNDATION LIMITED

ABN: 46 108 200 933




## AUDITOR'S INDEPENDENCE DECLARATION UNDER SECTION 307C OF THE CORPORATIONS ACT 2001 TO THE DIRECTORS OF REEF CHECK FOUNDATION LIMITED

I declare that, to the best of my knowledge and belief, during the year ended 30 June 2008 there have been:

- no contraventions of the auditor independence requirements as set out in the *Corporations Act 2001* in relation to the audit; and
- no contraventions of any applicable code of professional conduct in relation to the audit.

  
Moore Stephens

  
John Zabala  
Date: 10<sup>th</sup> October 2008  
Address: Townsville

## DISCUSSION AND ANALYSIS OF THE FINANCIAL STATEMENTS

### Information on Reef Check Foundation Limited Concise Financial Report

The concise financial report is an extract from the full financial report for the year ended 30 June 2008. The financial statements and disclosures in the concise financial report have been derived from the 2008 Financial Report of Reef Check Foundation Limited. A copy of the full financial report and auditor's report will be sent to any member, free of charge, upon request.

The discussion and analysis is provided to assist members in understanding the concise financial report. The discussion and analysis is based Reef Check Foundation Limited financial statements and the information contained in the concise financial report has been derived from the full 2008 Financial Report of Reef Check Foundation Limited.

### Income Statement

The loss attributable to members for the year is \$7,547 (2007: Profit \$43,240). This is mainly due to the available cash flow being tied as liabilities to specific projects. Expenditure continued on projects in which funding had already been received.

### Balance Sheet

Total assets increased by \$39,863 to \$239,664 representing an increase of 20%. This increase was mainly attributable to the following:

- Increase in cash holdings of \$59,413 mainly due to grants received but not yet fully expended
- Increase in receivables of \$17,556 due to a large grant receivable at 30 June 2008
- A reduction in plant and equipment due to depreciation charged during the year

Total liabilities increased by \$47,409 mainly due to an increase in unexpended grants of \$35,117.

### Cash Flow Statement

Cash flows generated from operating activities reduced by \$59,661 mainly due an increase in receivables offsetting decreases in inventory and payables.

Cash on hand therefore increased \$59,413 from 2007

# REEF CHECK FOUNDATION LIMITED

ABN: 46 108 200 933



<b>INCOME STATEMENT</b>			
<b>FOR THE YEAR ENDED 30 JUNE 2008</b>			
	<b>Note</b>	<b>2008</b>	<b>2007</b>
		<b>\$</b>	<b>\$</b>
Revenue	2	297,202	223,817
Depreciation expenses		(3,635)	(2,163)
Employee benefit expenses		(105,850)	(102,393)
Other expenses		(195,264)	(76,021)
Profit before income tax		(7,547)	43,240
Income tax expense		-	-
Profit after income tax		(7,547)	43,240

<b>BALANCE SHEET</b>			
<b>AS AT 30 JUNE 2008</b>			
	<b>Note</b>	<b>2008</b>	<b>2007</b>
		<b>\$</b>	<b>\$</b>
<b>ASSETS</b>			
<b>CURRENT ASSETS</b>			
Cash and cash equivalents		197,310	137,897
Trade and other receivables		25,105	7,549
Inventories		-	33,471
Other current assets		200	200
<b>TOTAL CURRENT ASSETS</b>		<b>222,615</b>	<b>179,117</b>
<b>NON-CURRENT ASSETS</b>			
Property, plant and equipment		17,049	20,684
<b>TOTAL NON-CURRENT ASSETS</b>		<b>17,049</b>	<b>20,684</b>
<b>TOTAL ASSETS</b>		<b>239,664</b>	<b>199,801</b>
<b>CURRENT LIABILITIES</b>			
Trade and other payables		153,704	106,295
<b>TOTAL CURRENT LIABILITIES</b>		<b>153,704</b>	<b>106,295</b>
<b>TOTAL LIABILITIES</b>		<b>153,704</b>	<b>106,295</b>
<b>NET ASSETS</b>		<b>85,960</b>	<b>93,506</b>
<b>EQUITY</b>			
Retained Earnings		85,960	93,506
<b>TOTAL EQUITY</b>		<b>85,960</b>	<b>93,506</b>

The accompanying notes form part of these financial statements.

# REEF CHECK FOUNDATION LIMITED

ABN: 46 108 200 933



## STATEMENT OF RECOGNISED INCOME AND EXPENDITURE FOR THE YEAR ENDED 30 JUNE 2008

	Retained Earnings \$	Total \$
Balance at 1 July 2006	50,266	50,266
Profit attributable to the entity	43,240	43,240
Balance at 30 June 2007	93,506	93,506
Profit attributable to the entity	(7,547)	(7,547)
Balance at 30 June 2008	85,960	85,960

## CASH FLOW STATEMENT FOR THE YEAR ENDED 30 JUNE 2008

	Note	2008 \$	2007 \$
CASH FLOW FROM OPERATING ACTIVITIES			
Receipts from customers		307,679	315,603
Payments to suppliers and employees		(255,351)	(197,525)
Interest received		7,084	995
Net cash generated from operating activities		59,412	119,073
CASH FLOW FROM INVESTING ACTIVITIES			
Payment for property, plant and equipment		-	(19,712)
Net cash used in investing activities		-	(19,712)
Net increase in cash held		59,412	99,361
Cash at the beginning of the financial year		137,897	38,536
Cash at the end of the financial year		197,310	137,897

The accompanying notes form part of these financial statements.



# REEF CHECK FOUNDATION LIMITED

ABN: 46 108 200 933



## NOTES TO THE CONCISE FINANCIAL REPORT FOR THE YEAR ENDED 30 JUNE 2008

### Note 1: Basis of Preparation of the Concise Financial Report

The concise financial report is an extract for the full financial report for the year ended 30 June 2008. The concise financial report has been prepared in accordance with Accounting Standard AASB 1039: Concise Financial Reports, and the *Corporations Act 2001*. The financial statements, specific disclosures and other information included in the concise financial report are derived from and are consistent with the full financial report of Reef Check Foundation Limited. The concise financial report cannot be expected to provide as detailed an understanding of the financial performance, financial position and financing and investing activities of Reef Check Foundation Limited as the full financial report. A copy of the full financial report and auditor's report will be sent to any member, free of charge, upon request.

The presentation currency used in this concise financial report is Australian dollars.

The following applicable Australian Accounting Standards and Australian Accounting Interpretations have been applied:

AASB 101: Presentation of Financial Statements;

AASB 107: Cash Flow Statements;

AASB 108: Accounting Policies, Changes in Accounting Estimates and Errors;

AASB 110: Events after the Balance Sheet Date;

AASB 1004: Contributions;

AASB 1031: Materiality; and

AASB 1048: Interpretation and Application of Standards.

No other Accounting Standards, Accounting Interpretations or other authoritative pronouncements of the Australian Accounting Standards Board have been applied.

Note 2: Revenue	2008	2007
	\$000	\$000
– Donations	15,694	3,682
– Interest	7,084	995
– Grants	256,079	188,242
– Training Fees	7,082	16,453
– Underwater guides	2,044	3,535
– Other Revenue	9,219	10,910
<b>Total Revenue</b>	<b>297,202</b>	<b>223,817</b>

### Note 3: Events Subsequent to Reporting Date

No significant events have occurred after balance date that requires reporting here.

## DIRECTORS' DECLARATION

The directors of Reef Check Foundation Limited declare that the concise financial report of Reef Check Foundation Limited for the financial year ended 30 June 2008, as set out on pages 1 to 4:

- complies with Accounting Standard AASB 1039: Concise Financial Reports; and
- is an extract from the full financial report for the year ended 30 June 2008 and has been derived from and is consistent with the full financial report of Reef Check Foundation Limited

This declaration is made in accordance with a resolution of the Board of Directors.

Director: .....

Jocelyn Hill

Dated this 15<sup>th</sup> day of October 2008

# REEF CHECK FOUNDATION LIMITED

ABN: 46 108 200 933



## INDEPENDENT AUDITOR'S REPORT TO THE MEMBERS OF REEF CHECK FOUNDATION LIMITED

### Report on the concise financial report

The accompanying concise financial report of Reef Check Foundation Limited comprises the balance sheet as at 30 June 2008, the income statement, statement of recognised income and expenditure and cash flow statement for the year then ended and related notes, derived from the audited financial report of Reef Check Foundation Limited for the year ended 30 June 2008, and the discussion and analysis. The concise financial report does not contain all the disclosures required by the Australian Accounting Standards.

#### *Directors' responsibility for the concise financial report*

The directors are responsible for the preparation and presentation of the concise financial report in accordance with Accounting Standard AASB 1039: *Concise Financial Reports* (including the Australian Accounting Interpretations), statutory and other requirements. This responsibility includes establishing and maintaining internal control relevant to the preparation of the concise financial report; selecting and applying the appropriate accounting policies; and making accounting estimates that are reasonable in the circumstances.

#### *Auditor's responsibility*

Our responsibility is to express an opinion on the concise financial report based on our audit procedures. We have conducted an independent audit, in accordance with Australian Auditing Standards, of the financial report of Reef Check Foundation Limited for the year ended 30 June 2008. Our audit report on the financial report for the year was signed on 10th October 2008 and was not subject to any modification. The Australian Auditing Standards require that we comply with relevant ethical requirements relating to audit engagements and plan and perform the audit to obtain reasonable assurance whether the financial report for the year is free from material misstatement.

Our procedures in respect of the concise financial report included testing that the information in the concise financial report is derived from, and is consistent with, the financial report for the year, and examination on a test basis, of evidence supporting the amounts, discussion and analysis, and other disclosures which were not directly derived from the financial report for the year. These procedures have been undertaken to form an opinion whether, in all material respects, the concise financial report complies with Accounting Standard AASB 1039: *Concise Financial Reports* and whether the discussion and analysis complies with the requirements laid down in AASB 1039: *Concise Financial Reports*.

We believe that the audit evidence we have obtained is sufficient and appropriate to provide a basis for our audit opinion.

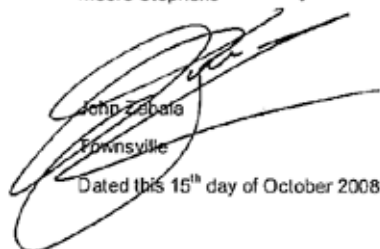
#### *Independence*

In conducting our audit, we have complied with the independence requirements of the *Corporations Act 2001*. We confirm that the independence declaration required by the *Corporations Act 2001*, provided to the directors of Reef Check Foundation Limited on 10th October 2008, would be in the same terms if provided to the directors as at the date of this auditor's report.

#### *Auditor's opinion*

In our opinion, the concise financial report including the discussion and analysis Reef Check Foundation Limited for the year ended 30 June 2008 complies with Accounting Standard AASB 1039: *Concise Financial Reports*.

  
Moore Stephens

  
John Zepala  
Townsville  
Dated this 15<sup>th</sup> day of October 2008

# Our Sponsors & Supporters 2007/2008

Reef Check Australia would like to thank our main supporters and sponsors.

## Project Partners

Great Barrier Reef Marine Park Authority - Funding package (\$100,000 per annum ending June 2009) to support the Great Barrier Reef Project, the Palm Island Project, and to develop the Coral Trout Monitoring Project, as well as communication outputs.



Reef and Rainforest Research Centre – Funding package (\$50,000 per annum for four years ending June 2010 of Marine and Tropical Science Research Facilities (MTSRF) funding) to support the Great Barrier Reef Project as part of MTSRF Program 1: Status and Trends of Species and Ecosystems in the Great Barrier Reef. This funding is dependent upon Reef Check Australia completing monitoring surveys at 25 commercial dive sites, as well as implementing various communication tasks.

Burdekin Dry Tropics Natural Resource Management provided \$20,000 to support the scoping stage for the implementation of training for sponge farm divers and education materials for young people on Palm Island.



South East Queensland Catchments - \$15,000 was awarded in 2007 to support the establishment and administration of the South East Queensland Reef Check project and to monitor seven inshore reef sites.

Townsville City Council has provided \$15,000 in 2007 to support inshore reef monitoring around Magnetic Island and to assist in the development of school educational materials.



## Other Sponsors & Grant Providers

The Commonwealth National Heritage Trust – Envirofund, has awarded Reef Check Australia a number of Envirofund grants since 2003. During 2007/2008, grants were awarded to continue South East Queensland project, conduct Reef IQ educational workshops and develop a kids' web portal with interactive coral reef activities.



The George Alexander Foundation provided \$4,718 towards the Coral Trout Monitoring Program and Fishing Line Clean-up project.

BREAKWATER ISLAND CASINO COMMUNITY BENEFIT FUND TRUST awarded \$3,371 towards monitoring equipment.

Landcare Australia's Post Office grant (\$3,300) was awarded towards the Coral Trout Monitoring Program and Fishing Line Clean-up project.



Australian Government

Grants to Voluntary Environment and Heritage Organisations Program awarded \$2,300 towards Reef Check Australia's administrative expenses.



Project AWARE provided \$1,200 towards the Coral Trout Monitoring Program and Fishing Line Clean-up project.



# Our Sponsors & Supporters 2007/2008

## Corporate Supporters:

Reef Check Australia has a number of corporate supporters from the dive industry, Townsville businesses, as well as national supporters. In general these supporters have provided in-kind or reduced rate professional assistance as well as prizes for Reef Check Australia promotional activities.

## Supporters from the dive industry for 2007/2008:

The Australian Marine Park Tourism Operators and individual dive tourism businesses have provided significant in-kind support to Reef Check Australia by means of free-of-charge berth spaces for volunteer training and coral reef monitoring since 2001. Individual businesses that supported Reef Check Australia during 2007/2008 include:

Adrenalin Dive (Townsville)  
Cairns Dive Centre (Cairns)  
Calypso Reef Cruises (Port Douglas)  
Cruise Whitsundays (Airlie Beach)  
Daydream Island Adventures (Airlie Beach)  
Downunder Dive (Cairns)  
Fantasea Cruises (Airlie Beach)  
Haba Dive (Port Douglas)  
Hayman Island Resort (Airlie Beach)  
Mike Ball Dive (Cairns)  
New Horizon (Cairns)  
Ocean Cat (Brisbane)  
Pleasure Divers (Magnetic Island)  
Poseidon Dive (Port Douglas)  
Pro Dive (Cairns)  
Quicksilver Cruises (Port Douglas)  
Reef Encounter (Cairns)  
Reef Magic (Cairns)  
Reef Safari (Magnetic Island)  
Sunferries (Townsville)  
Sunlover Cruises (Cairns)  
Undersea Explorer (Port Douglas)



## Supporting businesses include:

Australian Natural History Unit  
Cape Byron Imports  
Connolly Suthers  
Digital Dimensions  
Digital Diver  
Donovan Media Group  
Imaginocean Productions  
Lotsa Printing  
Marketing Garage  
Maui Jim  
Moore Stephens  
Oceanic Australia  
PADI Asia Pacific  
PriceWaterhouseCoopers  
Quicksilver Foundation  
Reef Teach  
Scuba Pro Australia  
Sea World  
Steve Parrish Publishing  
Townsville Brewing Company  
Visy Recycling (Townsville)  
XRX (Townsville)

## Academic supporters include:

Griffith University  
James Cook University

## Government supporters:

Environment Protection Agency (Brisbane)  
Great Barrier Reef Marine Park Authority  
Townsville City Council [Creek to Coral Program]

## Collaborating organisations:

Australian Underwater Federation  
CapReef  
CoralWatch  
James Cook University Dive Club  
Project AWARE  
Reef Check Foundation (International)  
Reef and Rainforest Research Centre  
Sea Turtle Foundation

## Reef Check Australia would like to take this opportunity to thank and acknowledge our dedicated staff for 2007/2008:

Roger Beeden (Marketing & Communications Manager), Cherryr Huggon (Administration Co-ordinator), Jonathan Werry (South East Queensland Co-ordinator), our casual trainers: Pete Faulkner, Brian Pryde, Claire Bisseling, Chris Jones, David Roadknight and Rowena Hawnt and our volunteers on placement: Malo Hosken, Jo Roberts, Steve Prutzman and Tara Swansborough.

Reef Check Australia would also like to extend thanks to our board advisors and the supportive staff at Reef Check Foundation (International) in the USA.

# The Future

---

We would like to see our projects fully-implemented as soon as possible in time to respond to the serious and imminent threat of climate change.

Our Enterprise Information System is a priority to ensure we have a database to enable timely reporting of our volunteers' data and to help us effectively manage contributions from an unlimited number of people across Australia.

We are enthusiastic to implement this exciting and essential next phase. To do this we need to find individual donors and corporate sponsorship to provide financial support.

It's an exciting time ahead for Reef Check Australia with a heavy workload for the future.

I'd like to take this opportunity to thank our Board of Directors and staff for their strong commitment and support. I'd also like to thank our other stakeholders, supporting businesses and our many volunteers who generously give up their time to contribute to this worthy cause. I look forward to their continuing support over the coming years.

Ms. Jos Hill  
Managing Director





Reef Check Australia aims to ensure that this doesn't happen to our reefs. Without the support of Australia's general public and business, our reefs could reach this point where it's too late.

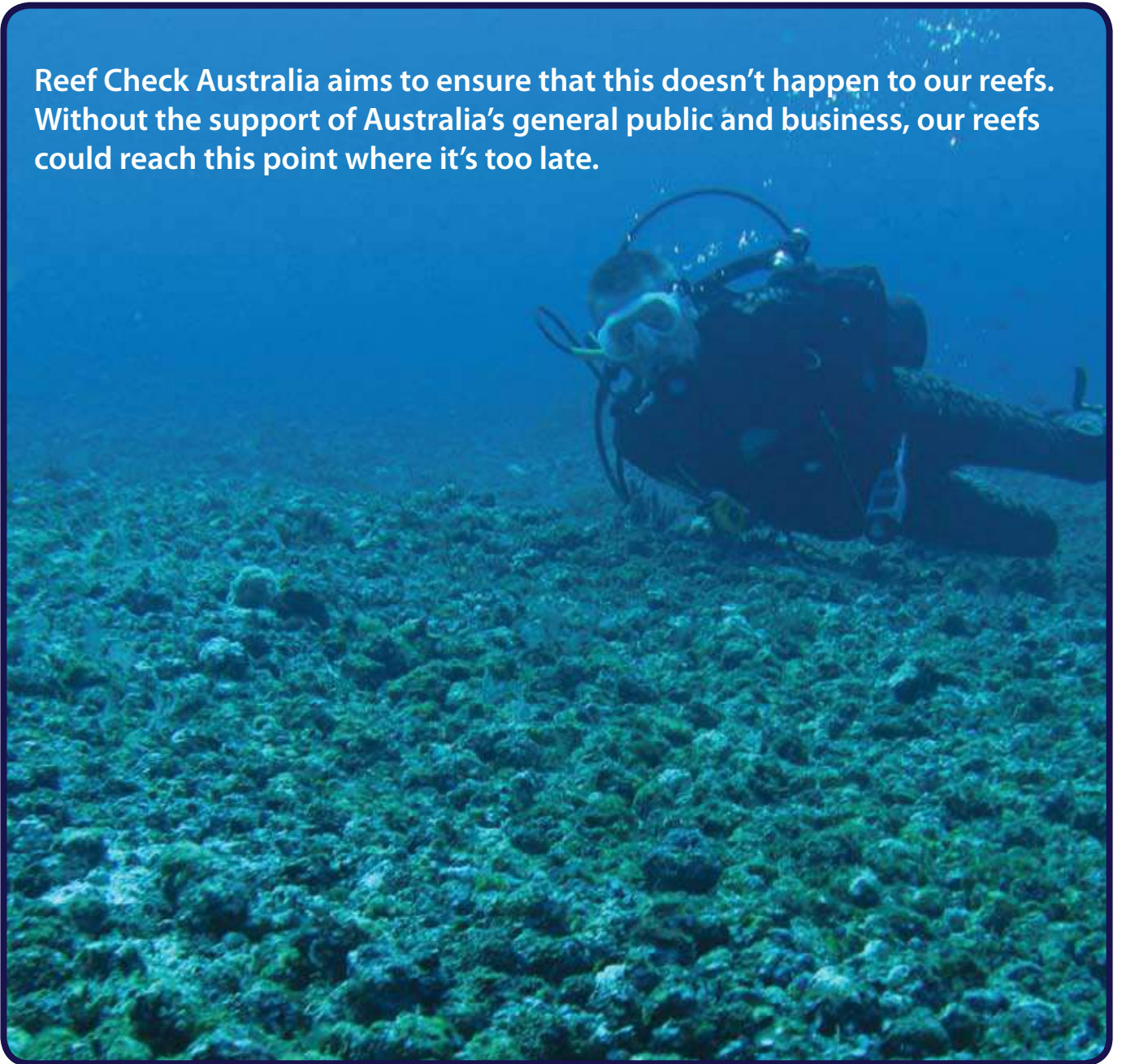
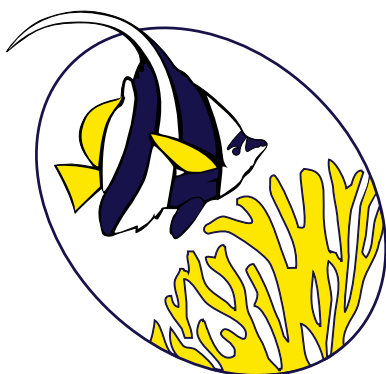


Photo by Silke Baron



**REEF CHECK**  
**AUSTRALIA**

**Postal Address:** PO Box 404 Townsville QLD 4810  
**Email:** [support@reefcheckaustralia.org](mailto:support@reefcheckaustralia.org)  
**Telephone:** +61 (0)7 4724 3950  
**Website:** [www.reefcheckaustralia.org](http://www.reefcheckaustralia.org)

Printed by

